

SCOM MONITOR Reset App

Installation Guide

Server Requirements:

- The SCOM Monitor Reset App must be installed on a **Server** that has the .net 4.5 framework installed/enabled and the **Operations Console** installed.
 - **Note:** Its recommended to install directly on one of your Management Servers if possible.

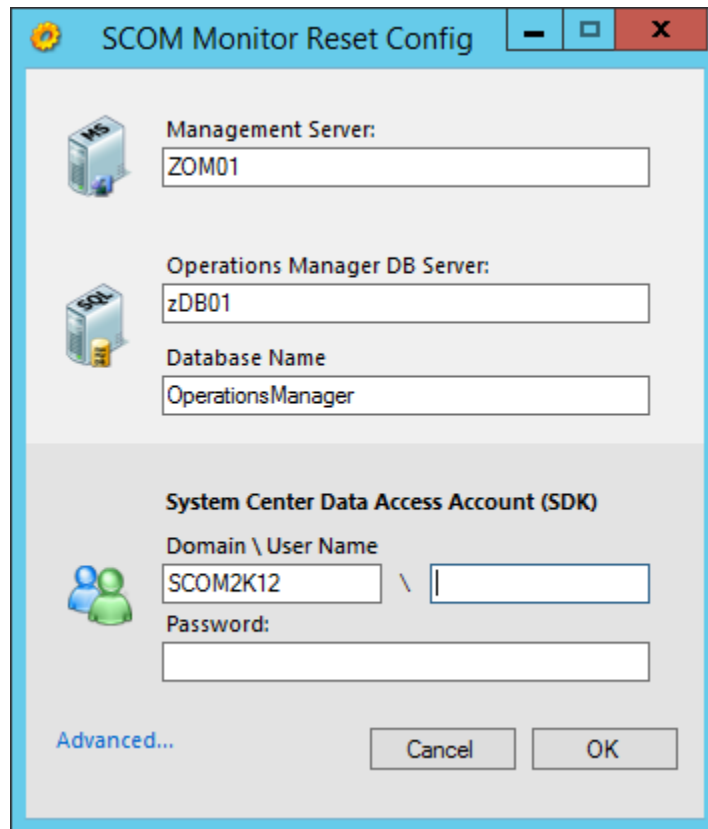
Instructions

- 1.) Copy the **setup.exe** file over to the Management Server.
- 2.) Right click and choose **Run as Administrator**
 - a. **Note:** In some environments Run as Administrator may not show up. In this case just click Install
- 3.) Click **Next**
- 4.) **Read** and **Accept** the License Agreement, then click **Next**
- 5.) **Choose** the location you want to install the tool and click **Next**
- 6.) On the **Ready to Install** screen click **Install**
- 7.) Leave the Launch the Program checked and Click **Finish**
- 8.) The SCOM Monitor Reset Dialog Config will open. If it does not open, on the **Desktop** you will see an Icon



called **Configure SCOM Monitor Reset App**.

- 9.) **Right click** on the icon and choose **Run as Administrator**.
- 10.) The configuration screen will automatically populate the Management Server, Operations Manager DB Server, Database Name, and Domain.



The image shows a Windows dialog box titled "SCOM Monitor Reset Config". It contains several input fields for configuration. The "Management Server" field is filled with "ZOM01". The "Operations Manager DB Server" field is filled with "zDB01". The "Database Name" field is filled with "OperationsManager". Below these, there is a section for the "System Center Data Access Account (SDK)" which includes a "Domain \ User Name" field filled with "SCOM2K12" and an empty "Password" field. At the bottom left is a link "Advanced...", and at the bottom right are "Cancel" and "OK" buttons.

Management Server:
ZOM01

Operations Manager DB Server:
zDB01

Database Name
OperationsManager

System Center Data Access Account (SDK)

Domain \ User Name
SCOM2K12 \

Password:

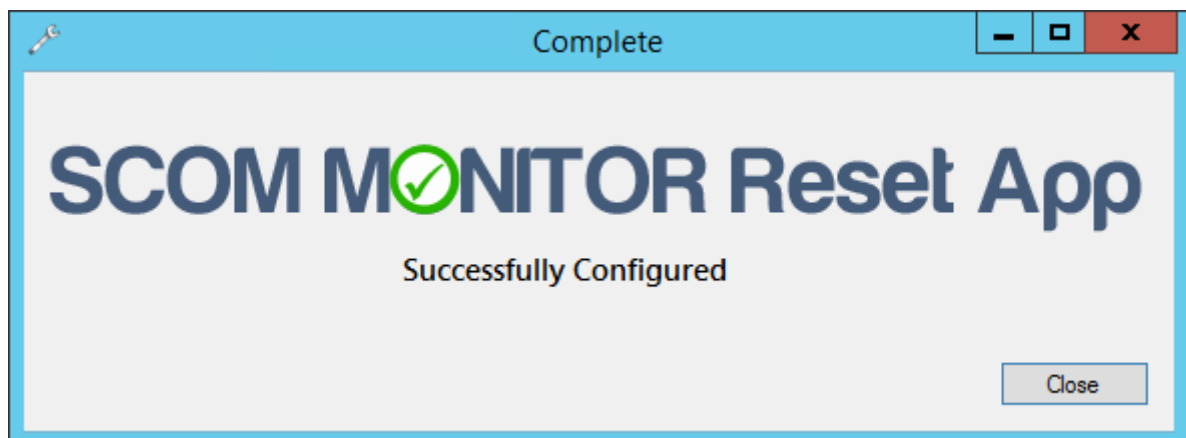
Advanced... Cancel OK

11.) Type in the **username** and **password** of the **System Center Data Access Account (SDK)**.

- a. **Note:** If you don't want to use the SDK Account, you can also create a new AD user that is a member of the **local administrators**, **SCOM Admins**, and has **read** access to the **Operations Manager Database**.

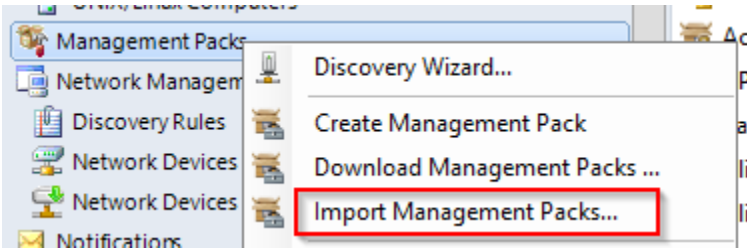
12.) Click **OK**

13.) On the Complete screen click **Close**

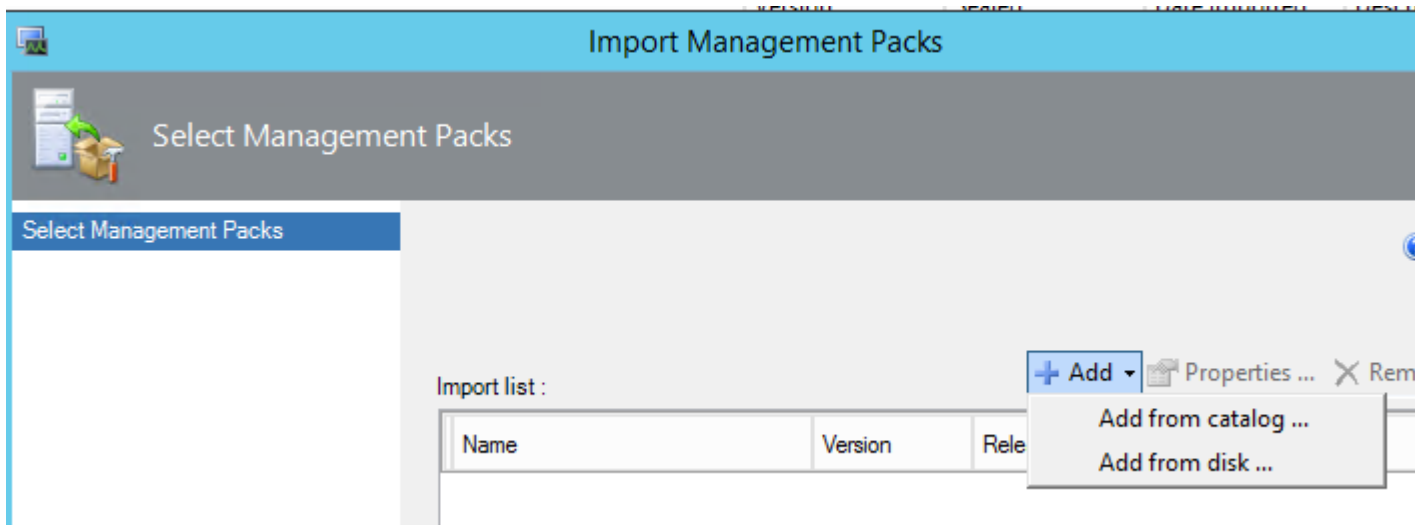


Import the Management Pack

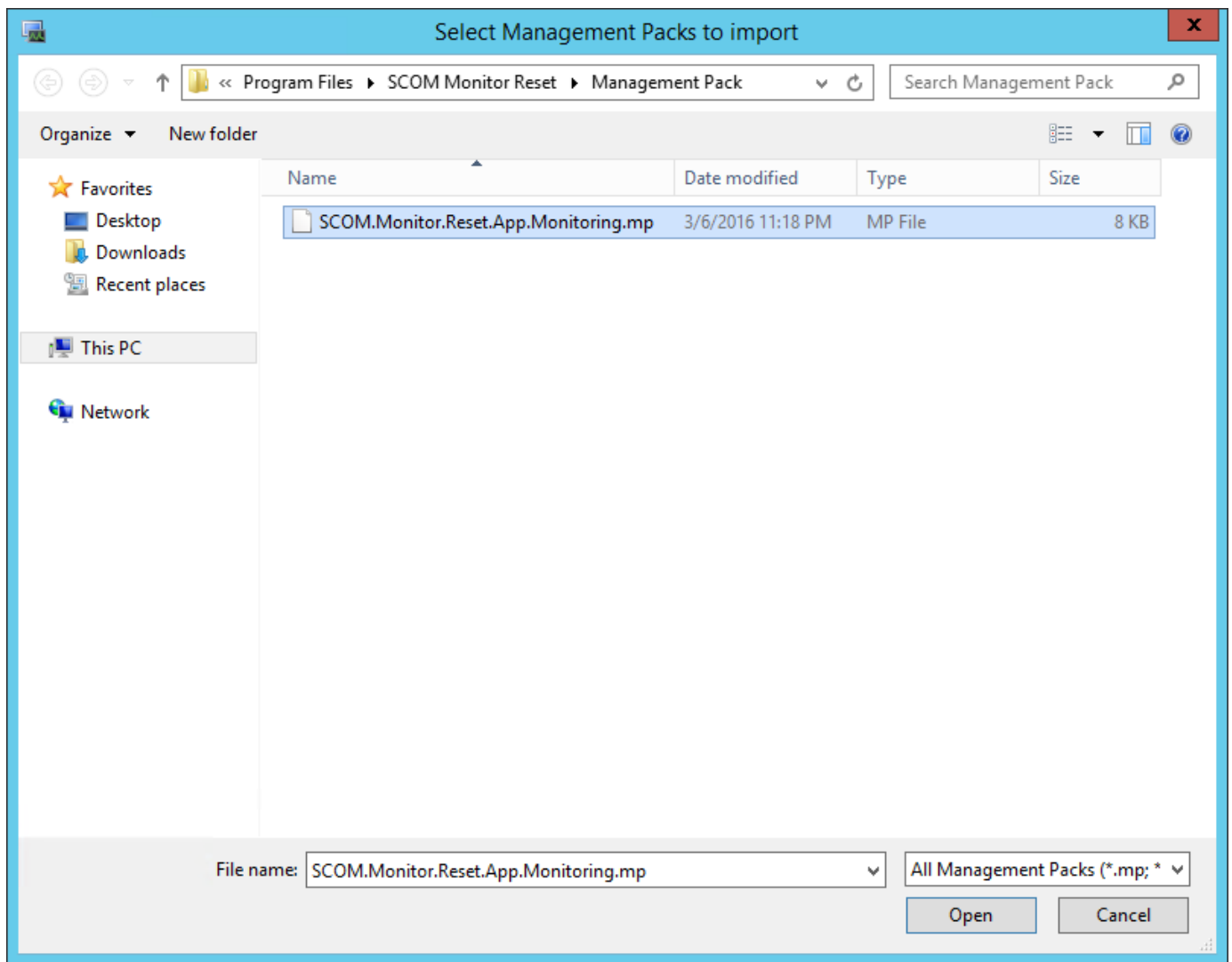
- 1.) Open the SCOM Console and Select the Administration Pane.
- 2.) Under Management Packs. Right click and select Import Management Packs



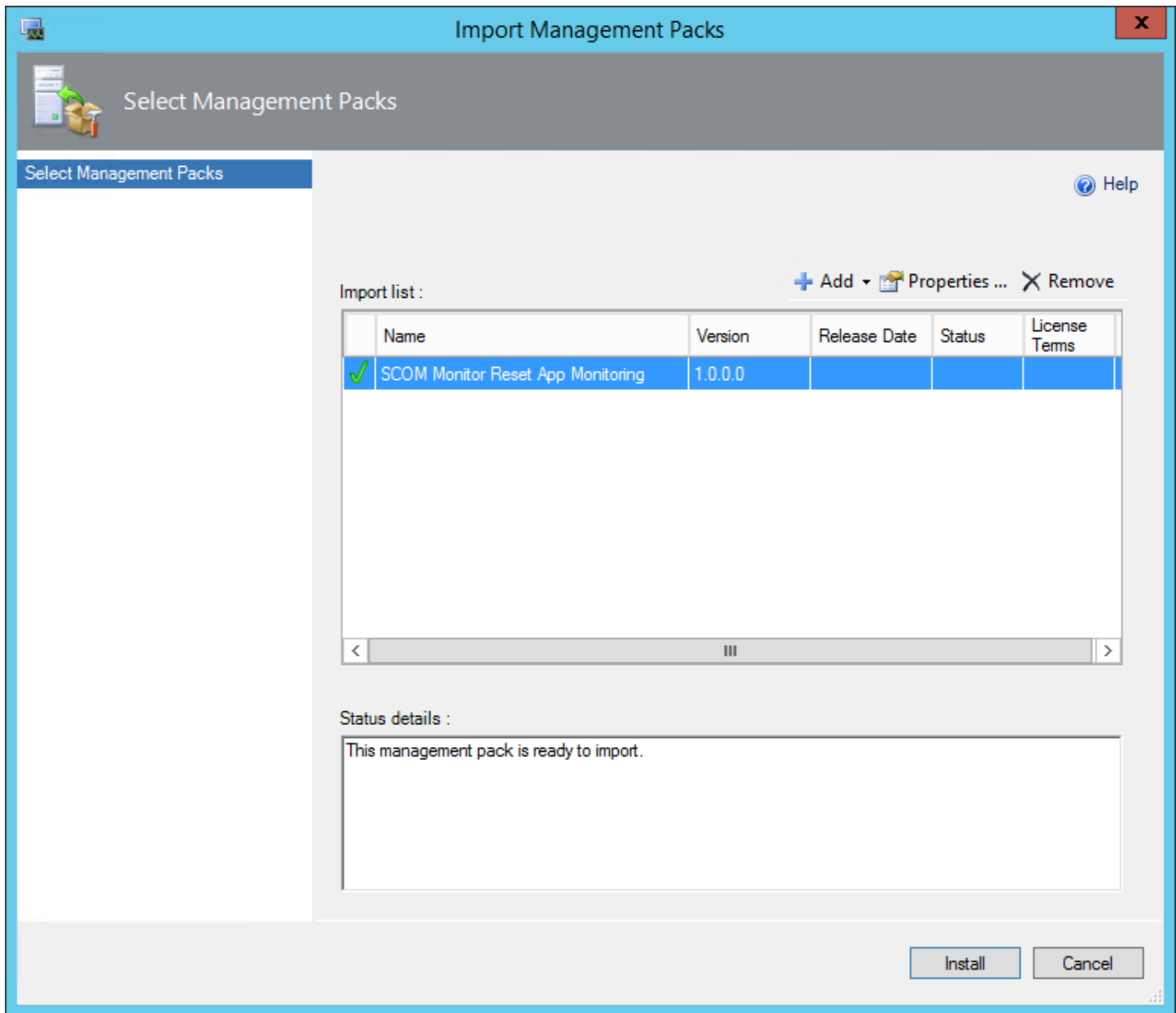
- 3.) Select Add From disk



- 4.) Select No on the Online Catalog Connection dialog
- 5.) **Browse** out to the install directory. **C:\Program Files\SCOM Monitor Reset\Management Pack**
- 6.) **Select the SCOM.Monitor.Reset.App.Monitoring.mp Management Pack and Click Open**



7.) Click the **Install** button.



8.) Click Close

9.) Go to the Monitoring Pane and you will see the new SCOM Monitor Reset App. (Note: It will take some time for objects to be discovered)

