

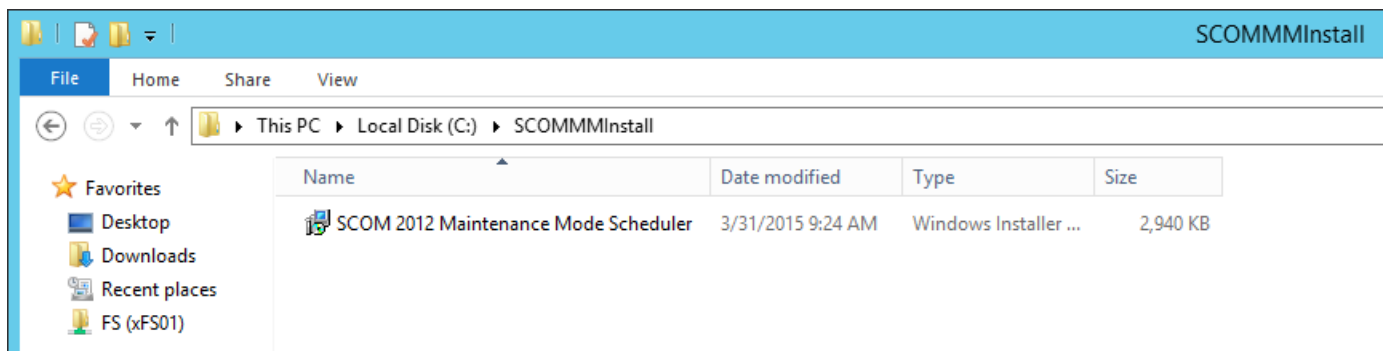
SCOM 2012 Maintenance Mode Scheduler


V7 Upgrade Guide

User Requirements: Users require Internet Explorer 9 or above, Google Chrome or Mozilla Firefox.

Instructions

- 1.) Copy the V7 **SCOM 2012 Maintenance Mode Scheduler.msi** files from the zip file over to the Management Server.

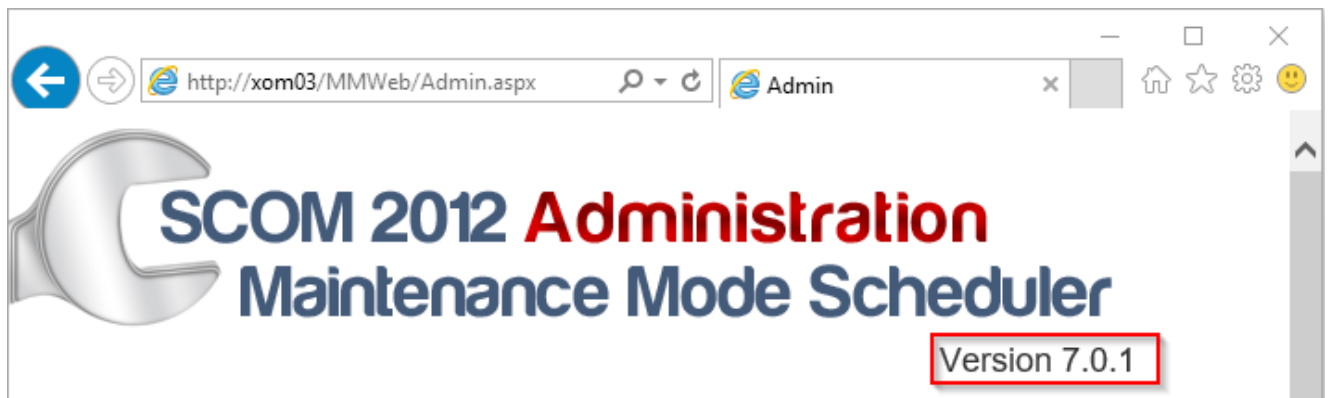


- 2.) Open up your admin page <http://yourServer/MMWeb/Admin.aspx>
- 3.) **Take a screenshot** (print screen) in case any customization have been made.
- 4.) Right click on **SCOM 2012 Maintenance Mode Scheduler.msi** and choose **Run as Administrator**
 - a. **Note:** In some environments Run as Administrator may not show up. In this case just click Install
- 5.) Click **Next**
- 6.) **Read** and **Accept** the License Agreement, then click **Next**
- 7.) On the **Ready to Install** screen click **Install**
- 8.) Click **Finish**
- 9.) On the **Desktop** you will see a wrench icon  called **Maintenance Mode 2012 Config**.
- 10.) **Right click** on the icon and choose **Run as Administrator**.
- 11.) The configuration screen will automatically populate the Management Server, Operations Manager DB Server, Database Name, and Domain.

- 12.) Type in the **username** and **password** of the **System Center Data Access Account (SDK)**.
 - a. **Note:** You can also create a new AD user that is a member of the **local administrators, SCOM Admins,** and have **read** access to the **Operations Manager Database.**
- 13.) Choose the **Date Format** you would like to use.
- 14.) Click **OK**
- 15.) On the complete screen click **Start** to Launch the Maintenance Mode App
- 16.) Go to <http://yourServer/MMWeb/Admin.aspx> make any modifications from screenshot.
- 17.) Verify that it says Version 7.0 on the Admin page

*Note if it doesn't show Version 7.0.1 or higher, do a clean reinstall.

<http://www.scom2k7.com/downloads/MMCleanReinstall.pdf>



18.) Input your license key. Go to <http://yourServer/MMWeb/Admin.aspx>

19.) In the Licensing Section. Type in your license key

Licensing

License Key :

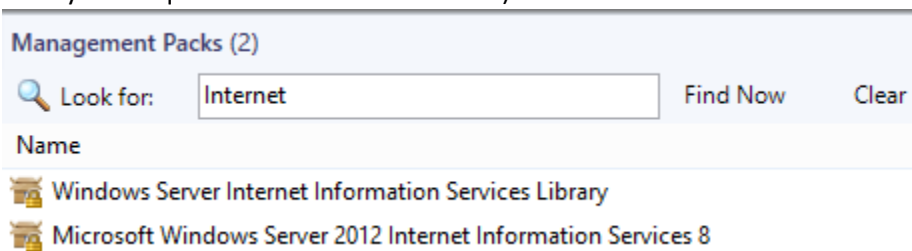
20.) Click **Activate**

21.) Launch the Web Console <http://yourServer/MMWeb>

Import the Updated SCOM 2012 Maintenance Mode Scheduler Management Packs (Recommended)

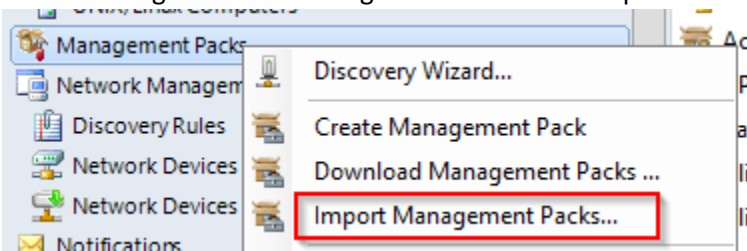
1.) Make sure you are running SCOM 2012 R2 UR2. <http://support.microsoft.com/kb/2929891>

2.) Verify you have the IIS 7.5 or 8 Management Packs Installed. (**Note:** The MP only has a dependency on the library but requires the full 7.5 or 8 IIS MP)

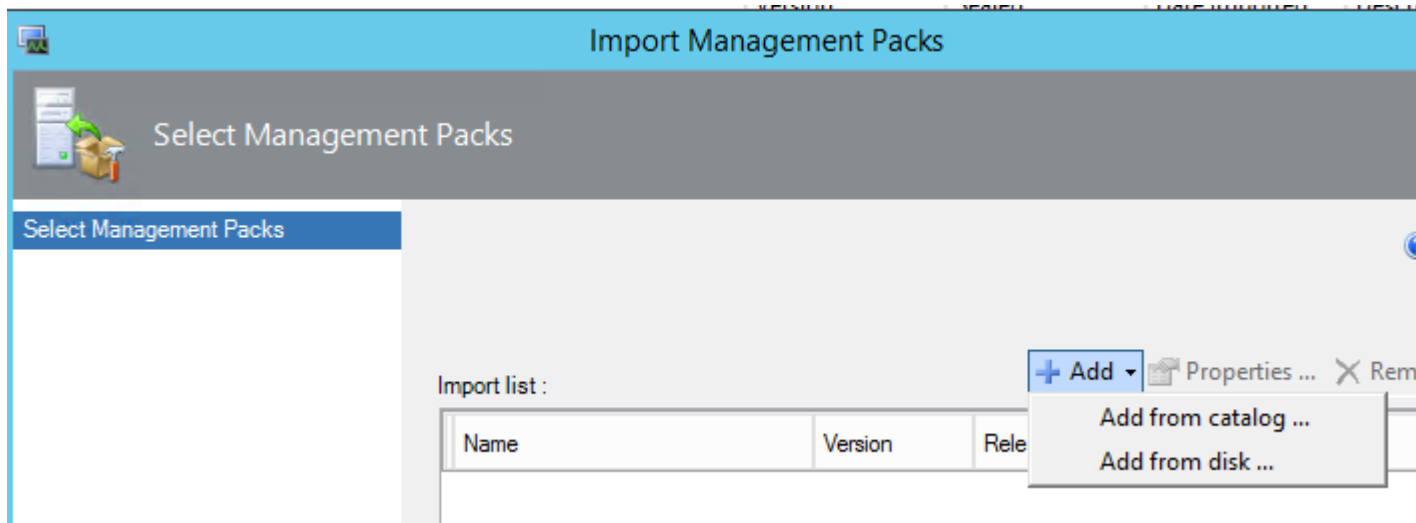


3.) Open the SCOM Console and Select the Administration Pane.

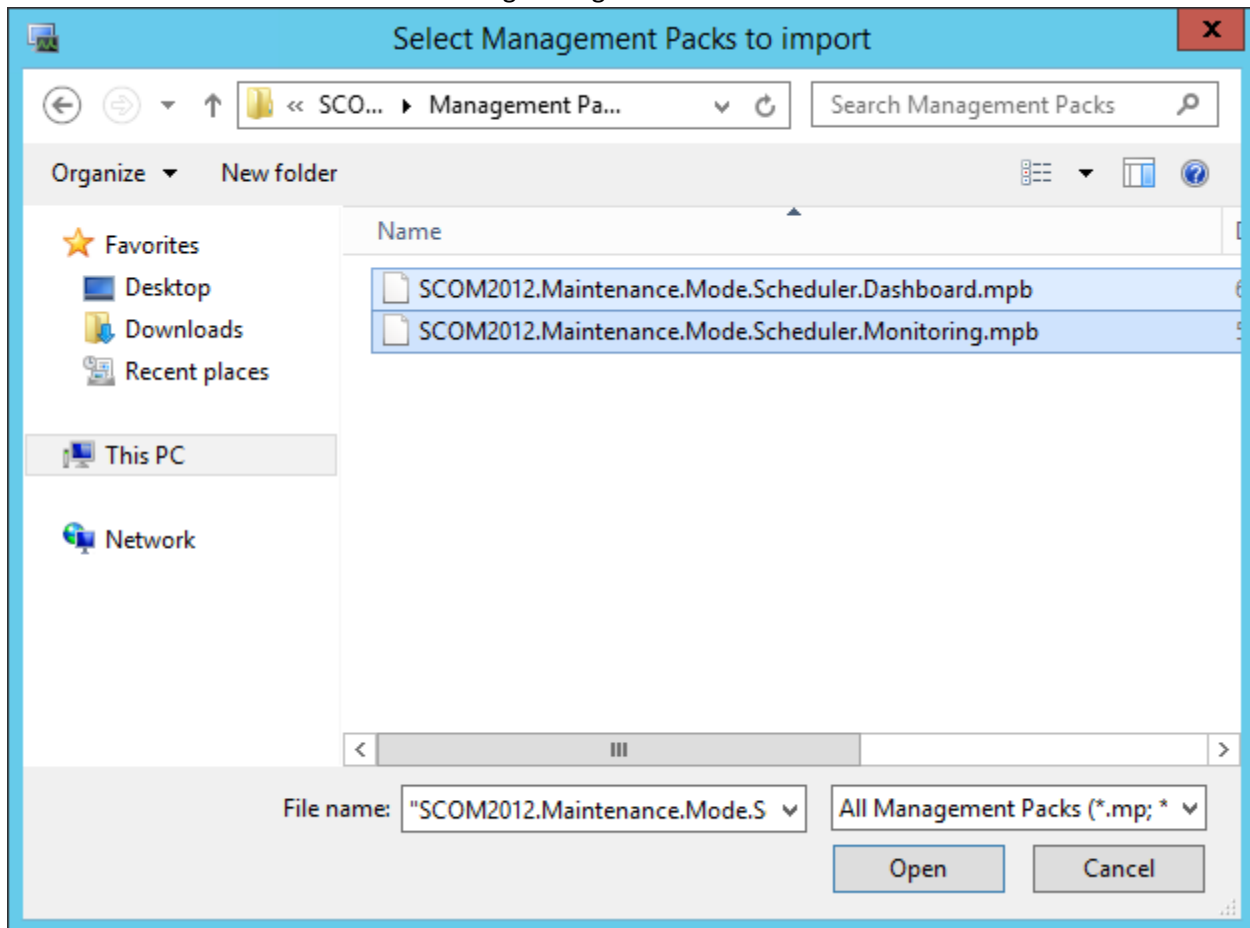
4.) Under Management Packs. Right click and select Import Management Packs



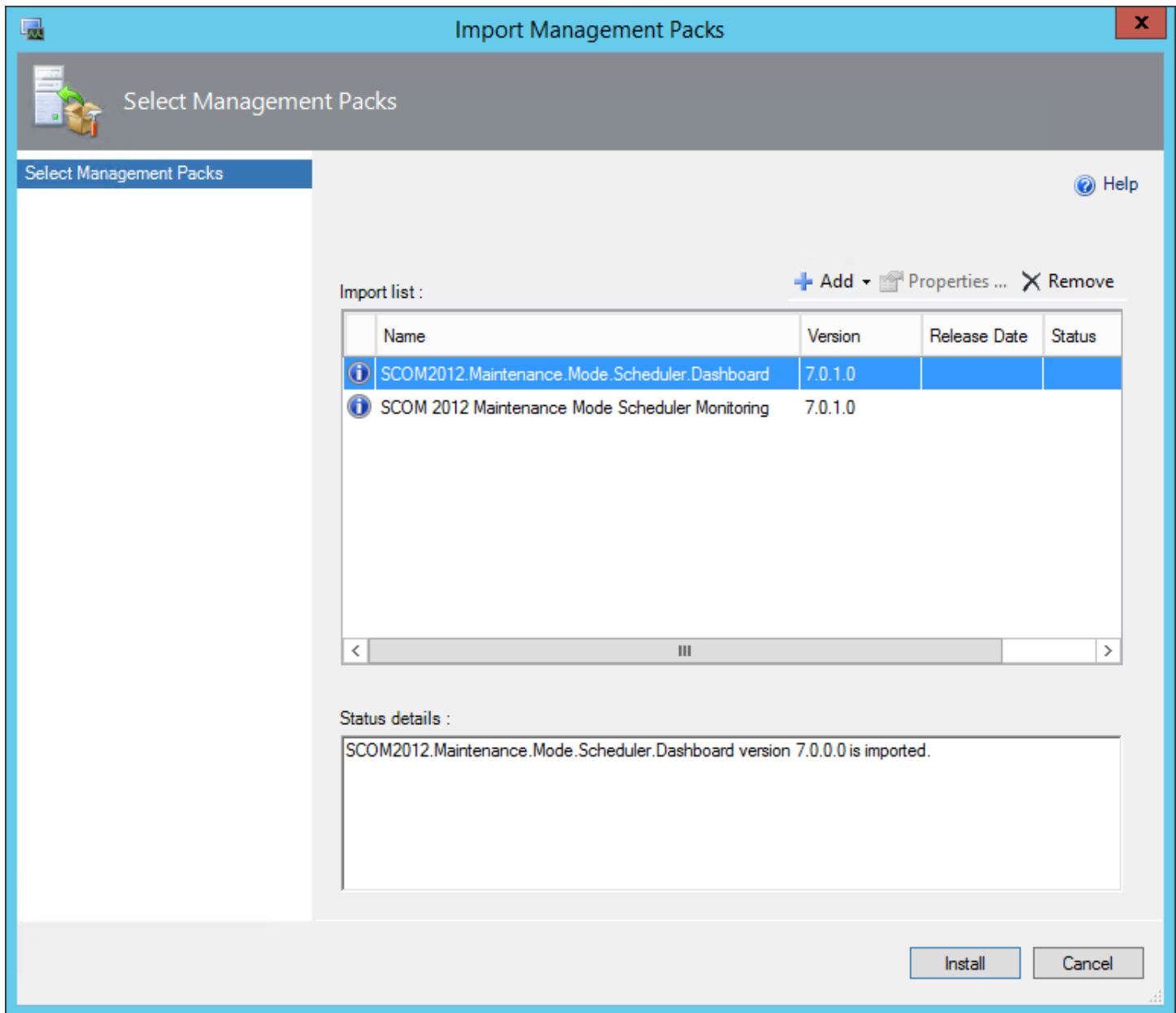
5.) Select Add From disk



- 6.) Select No on the Online Catalog Connection dialog
- 7.) Browse out the MM Scheduler install directory. C:\Program Files\SCOM 2012 Maintenance Mode Scheduler\Management Packs
- 8.) Select both the Dashboard and Monitoring Management Packs.



- 9.) Click the install button.



10.) Click Close

11.) Go to the Monitoring Pane and you will see the new SCOM Maintenance Mode Scheduler. (Note: It will take some time for objects to be discovered)

