

SCOM 2012 **Maintenance Mode Scheduler**

Installation Guide


Server Requirements:

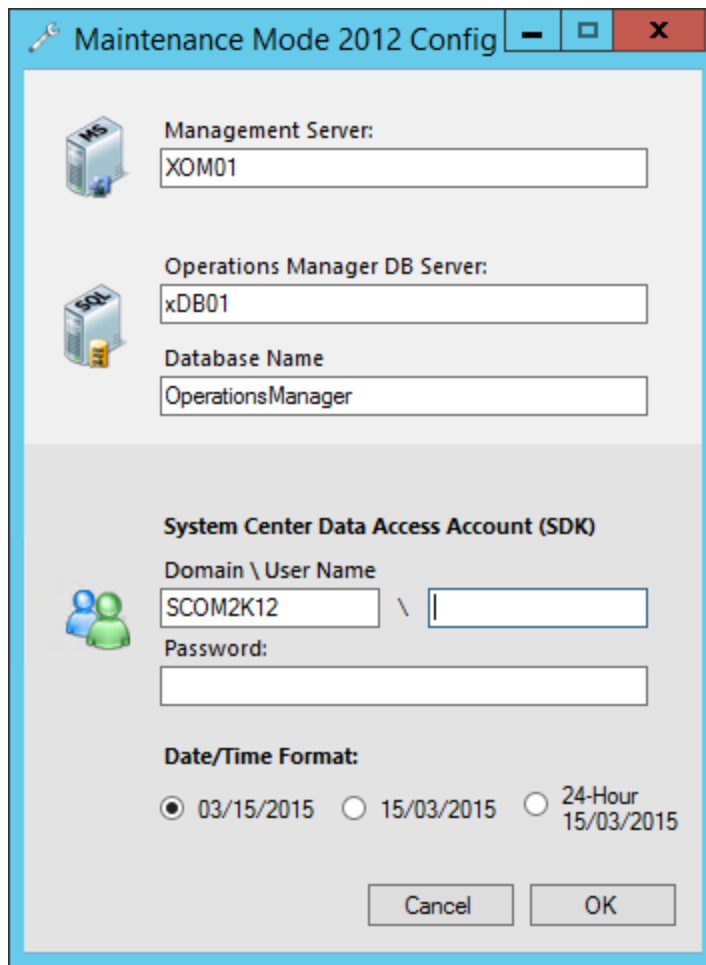
- The Maintenance Mode Scheduler must be installed on a **SCOM 2012 RTM, SP1, or R2, Management Server** that has the **Operations Console** and **Web Console** installed.

User Requirements:

- Users require Internet Explorer 9 or above, Google Chrome or Mozilla Firefox.

Instructions

- 1.) Copy the **SCOM 2012 Maintenance Mode Scheduler.msi** file over to the Management Server.
- 2.) Right click and choose **Run as Administrator**
 - a. **Note:** In some environments Run as Administrator may not show up. In this case just click Install
- 3.) Click **Next**
- 4.) **Read** and **Accept** the License Agreement, then click **Next**
- 5.) On the **Ready to Install** screen click **Install**
- 6.) Click **Finish**
- 7.) On the **Desktop** you will see a wrench icon  called **Maintenance Mode 2012 Config**.
- 8.) **Right click** on the icon and choose **Run as Administrator**.
- 9.) The configuration screen will automatically populate the Management Server, Operations Manager DB Server, Database Name, and Domain.



The image shows a Windows-style configuration window titled "Maintenance Mode 2012 Config". It has a blue title bar with standard minimize, maximize, and close buttons. The window is divided into several sections. The first section, labeled "Management Server:" with a server icon, contains a text box with "XOM01". The second section, labeled "Operations Manager DB Server:" with a server icon, contains a text box with "xDB01". Below this is a section labeled "Database Name" with a text box containing "OperationsManager". The third section is titled "System Center Data Access Account (SDK)" and contains a "Domain \ User Name" field with "SCOM2K12" and an empty second box, and a "Password:" field. The fourth section is titled "Date/Time Format:" and contains three radio buttons: "03/15/2015" (selected), "15/03/2015", and "24-Hour 15/03/2015". At the bottom right are "Cancel" and "OK" buttons.

Maintenance Mode 2012 Config

Management Server:
XOM01

Operations Manager DB Server:
xDB01

Database Name
OperationsManager

System Center Data Access Account (SDK)

Domain \ User Name
SCOM2K12 \

Password:

Date/Time Format:
☒ 03/15/2015 ☐ 15/03/2015 ☐ 24-Hour 15/03/2015

Cancel OK

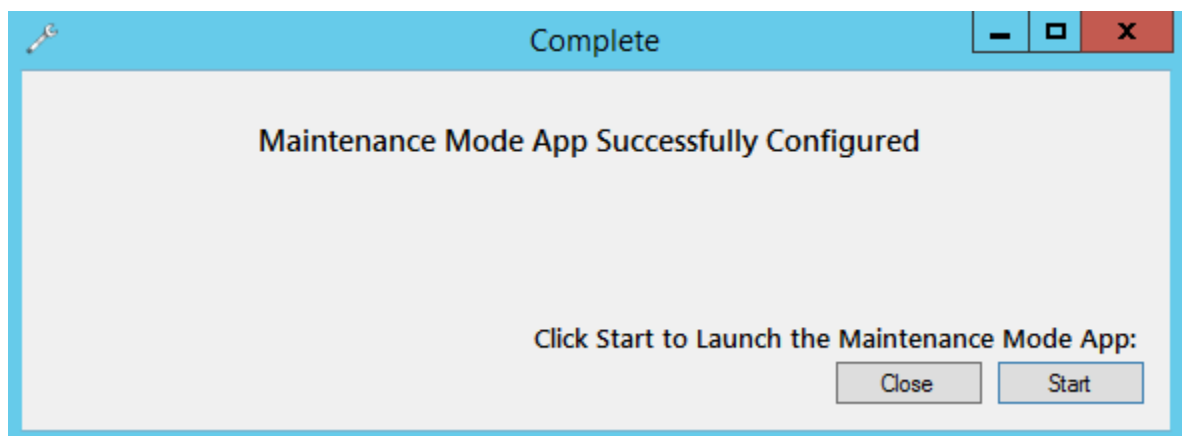
10.) Type in the **username** and **password** of the **System Center Data Access Account (SDK)**.

- a. **Note:** You can also create a new AD user that is a member of the **local administrators**, **SCOM Admins**, and have **read** access to the **Operations Manager Database**.

11.) Choose the **Date Format** you would like to use.

12.) Click **OK**

13.) On the complete screen click **Start** to Launch the Maintenance Mode App



The image shows a Windows-style completion window titled "Complete". It has a blue title bar with standard minimize, maximize, and close buttons. The main area is light gray and contains the text "Maintenance Mode App Successfully Configured". Below this, it says "Click Start to Launch the Maintenance Mode App:". At the bottom right are "Close" and "Start" buttons.

Complete

Maintenance Mode App Successfully Configured

Click Start to Launch the Maintenance Mode App:

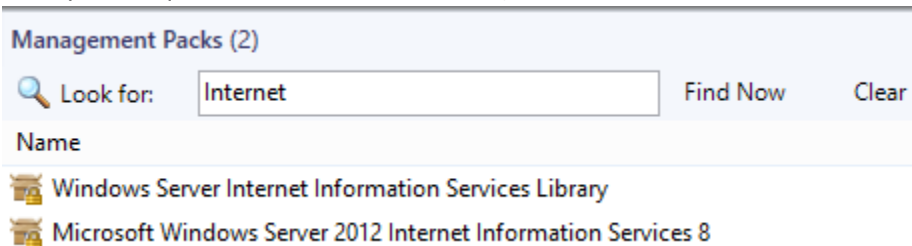
Close Start

Import the SCOM 2012 Maintenance Mode Scheduler Management Packs (Recommended)

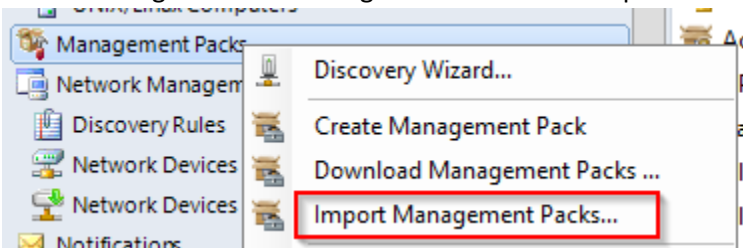
These Management pack were created with the help of SCOM Expert Tao Yang. <http://blog.tyang.org/>

More info on the Monitoring MP can be found here. <http://bit.ly/1m9bE6m>

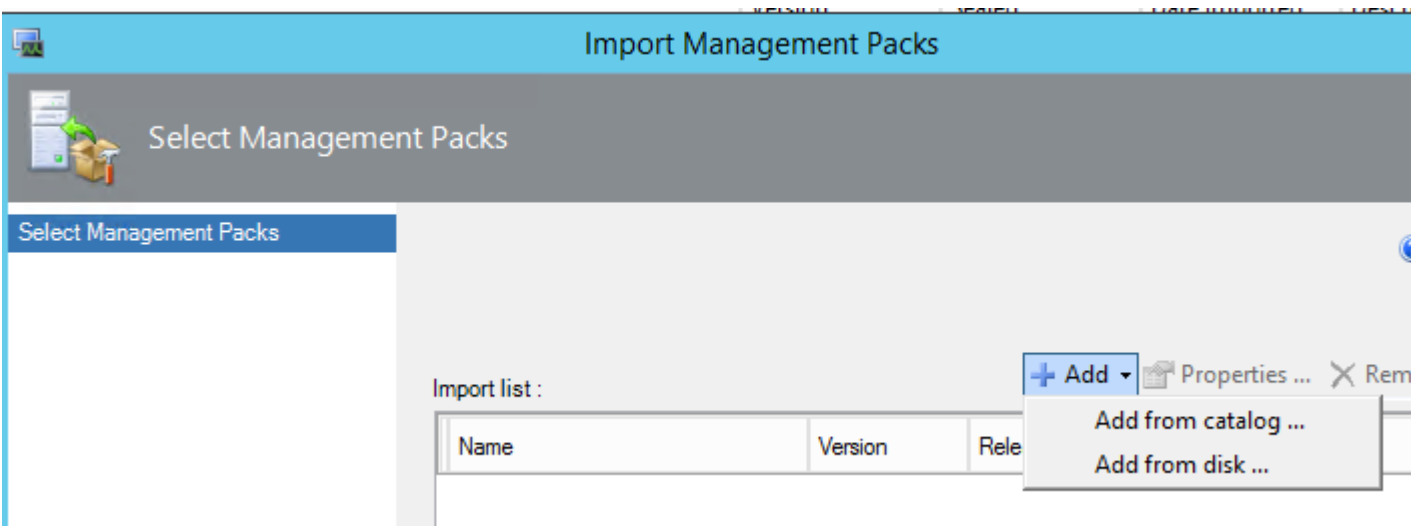
- 1.) Make sure you are running SCOM 2012 R2 UR2. <http://support.microsoft.com/kb/2929891>
- 2.) Verify you have the IIS 7.5 or 8 Management Packs Installed. (**Note:** The MP only has a dependency on the library but requires the full 7.5 or 8 IIS MP)



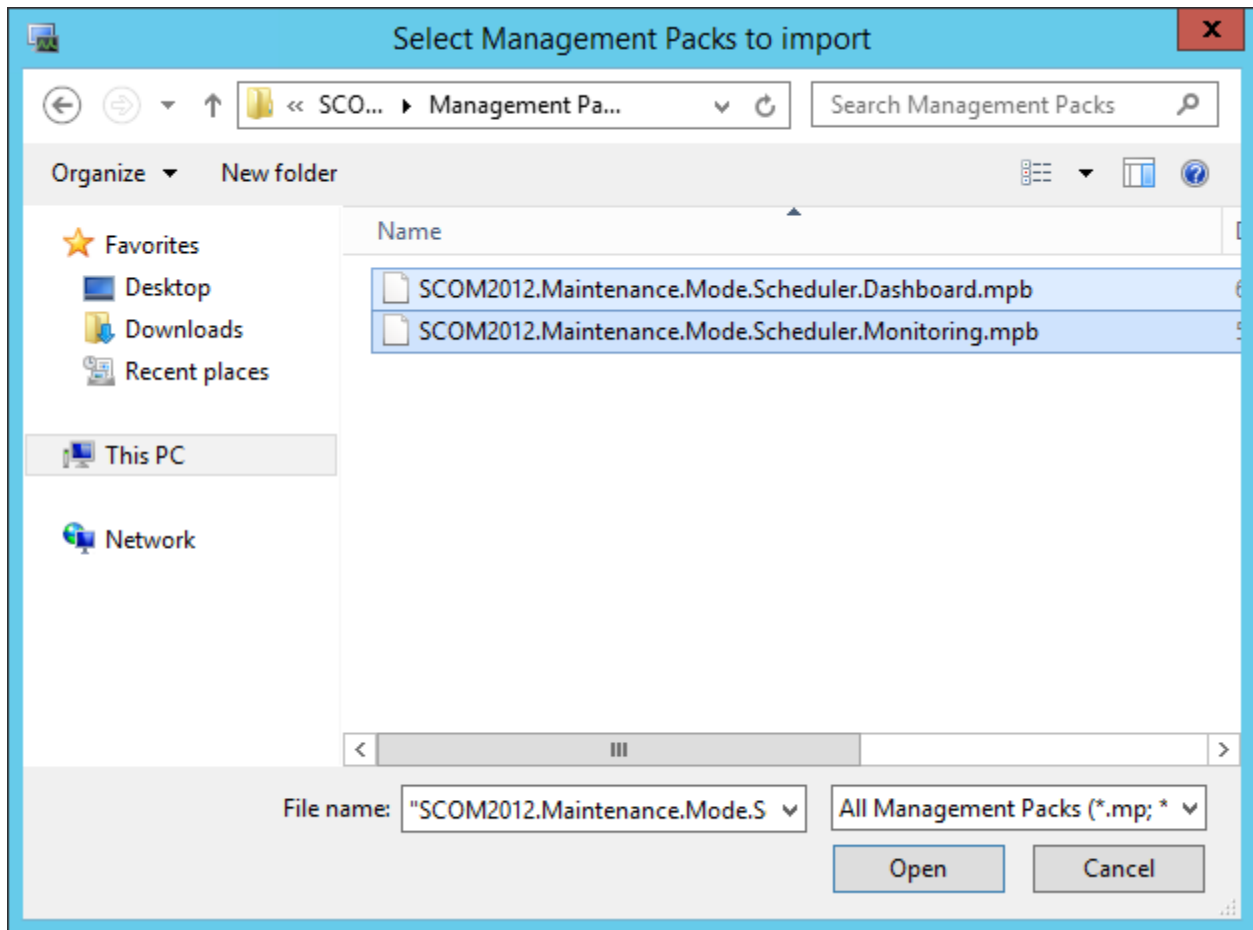
- 3.) Open the SCOM Console and Select the Administration Pane.
- 4.) Under Management Packs. Right click and select Import Management Packs



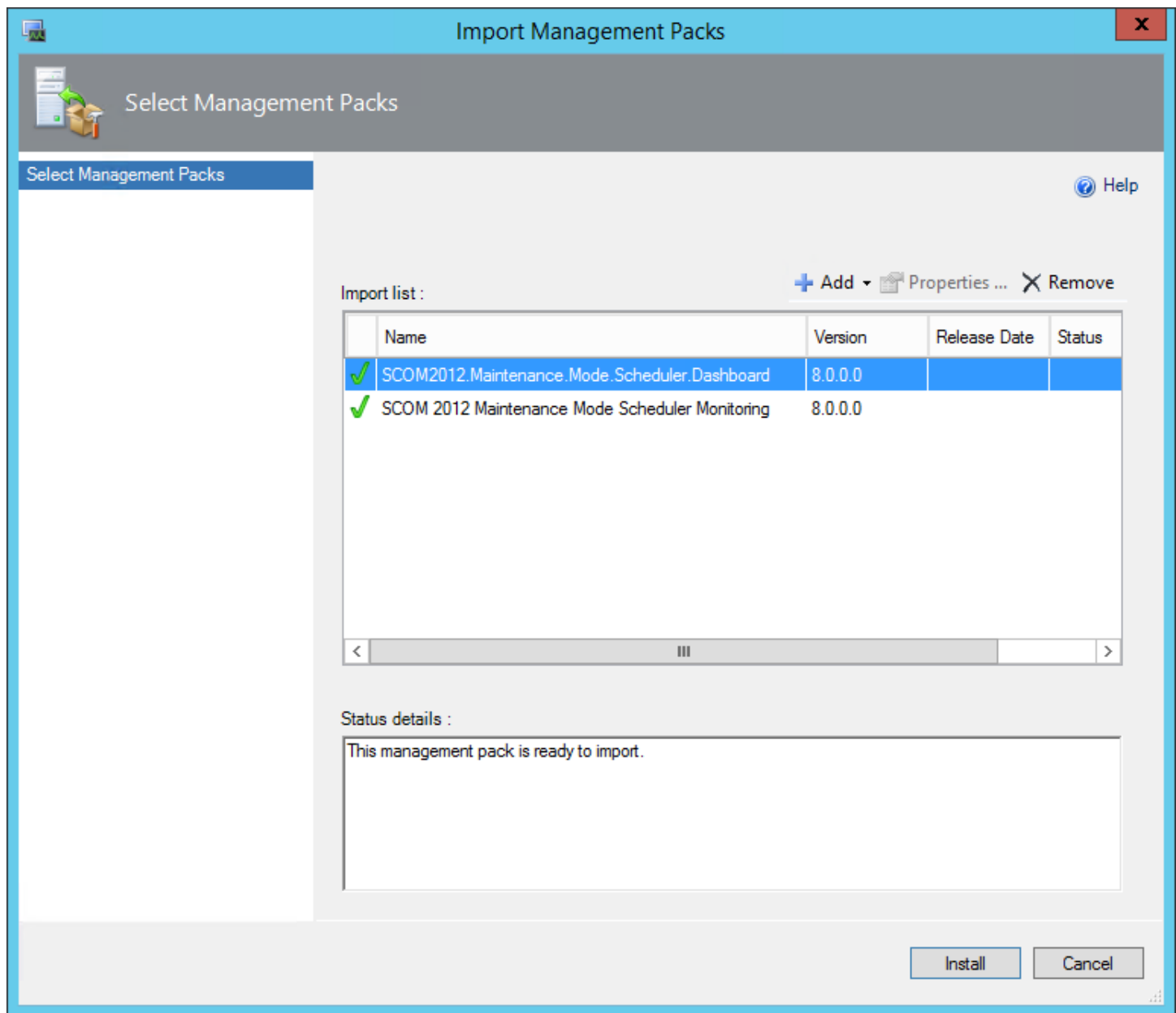
- 5.) Select Add From disk



- 6.) Select No on the Online Catalog Connection dialog
- 7.) Browse out the MM Scheduler install directory. C:\Program Files\SCOM 2012 Maintenance Mode Scheduler\Management Packs
- 8.) Select both the Dashboard and Monitoring Management Packs.



9.) Click the install button.



10.) Click Close

11.) Go to the Monitoring Pane and you will see the new SCOM Maintenance Mode Scheduler. (Note: It will take some time for objects to be discovered)

