

# SCOM Maintenance Mode Scheduler

## Administration Guide

This guide will cover how to customize and lock down the SCOM 2016 Maintenance Mode Scheduler for your end users.

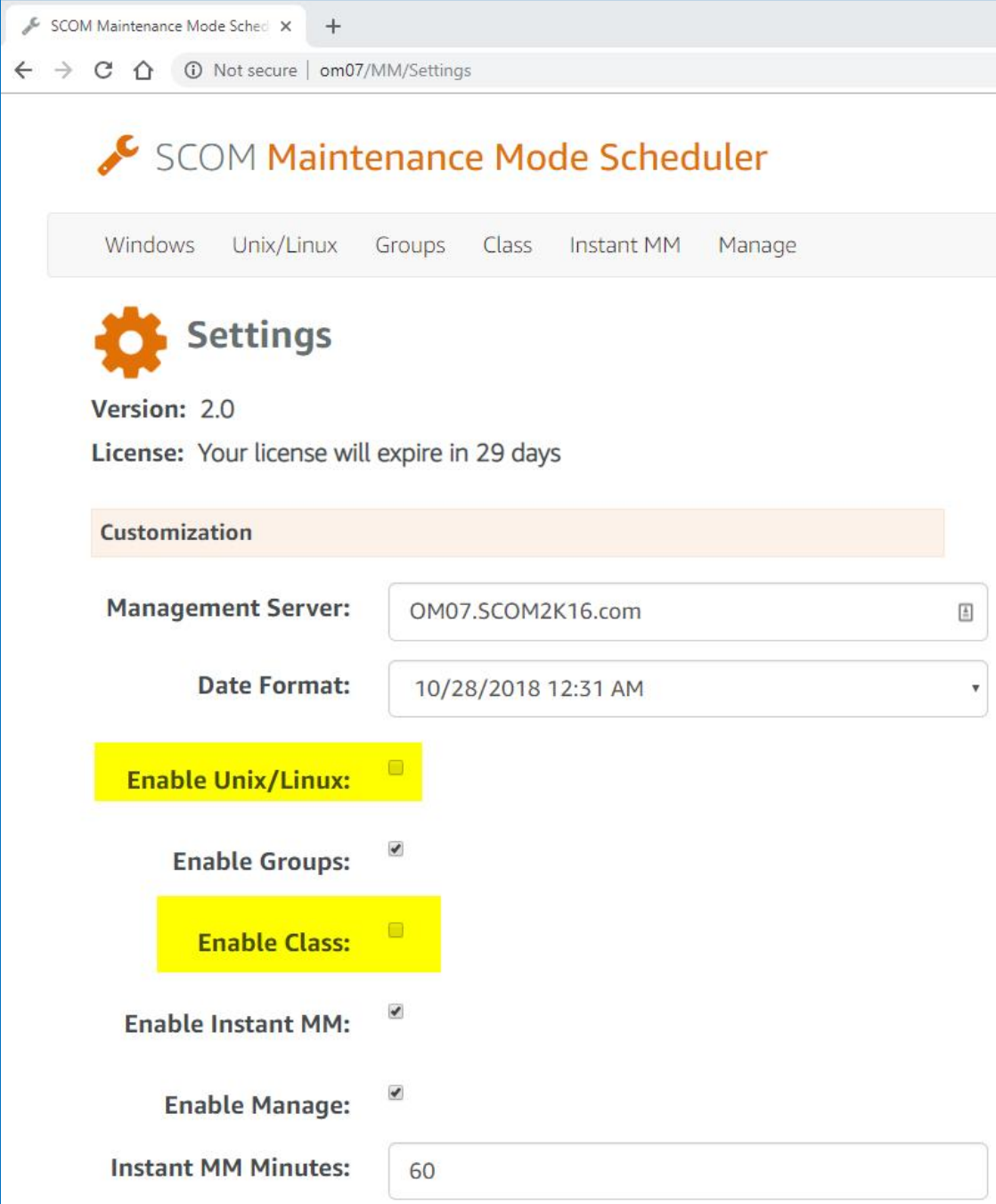
### Table of Contents

<b>Customize</b> Look and Feel .....	2
<b>Control Access</b> to the Maintenance Mode Scheduler Website.....	3
<b>Modify</b> One Click Maintenance Mode Default Minutes.....	4
<b>Change</b> Date Format .....	5

## Customize Look and Feel

In this scenario, the SCOM Administrator only wants **users** to see **Computers, Groups, and use Instant Maintenance Mode**.

- 1.) Go to the hidden Settings page. <http://yourMSServer/MM/Settings>
- 2.) Go to the Customization Section
- 3.) Uncheck **Unix Page and Class Page**
- 4.) Click **Save**



The screenshot shows a web browser window with the title "SCOM Maintenance Mode Scheduler". The address bar shows "om07/MM/Settings". The page has a navigation bar with tabs: "Windows", "Unix/Linux", "Groups", "Class", "Instant MM", and "Manage". Below the navigation bar is a "Settings" section with a gear icon. The "Settings" section includes a "Version: 2.0" and a "License: Your license will expire in 29 days". Below this is a "Customization" section. The "Customization" section contains several settings: "Management Server" (OM07.SCOM2K16.com), "Date Format" (10/28/2018 12:31 AM), "Enable Unix/Linux:" (unchecked), "Enable Groups:" (checked), "Enable Class:" (unchecked), "Enable Instant MM:" (checked), "Enable Manage:" (checked), and "Instant MM Minutes:" (60).

SCOM Maintenance Mode Scheduler

Windows Unix/Linux Groups Class Instant MM Manage

**Settings**

Version: 2.0

License: Your license will expire in 29 days

**Customization**

Management Server: OM07.SCOM2K16.com

Date Format: 10/28/2018 12:31 AM

Enable Unix/Linux: ☐

Enable Groups: ☒

Enable Class: ☐

Enable Instant MM: ☒

Enable Manage: ☒

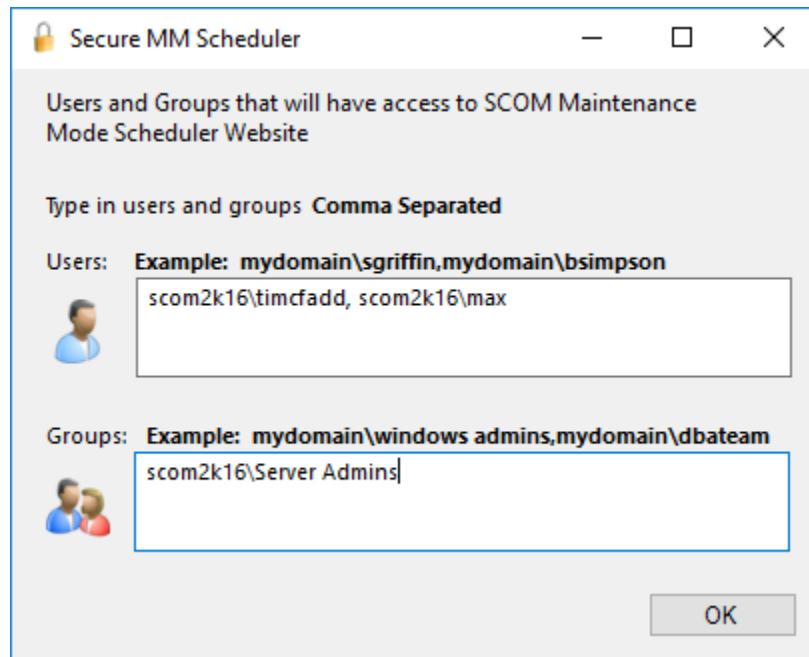
Instant MM Minutes: 60

Now when a user launches the Maintenance Mode scheduling tool he will see a simpler interface with only the Computer, Group, Instant MM and Manage Tab showing up.

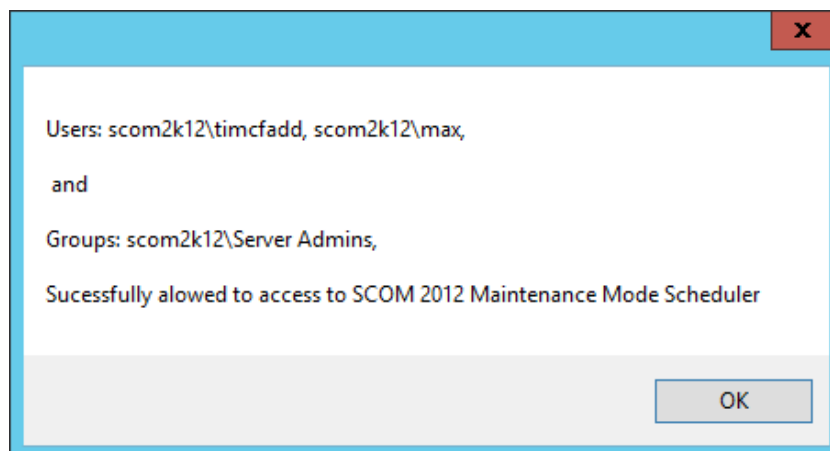
## Control Access to the Maintenance Mode Scheduler Website

In this scenario the SCOM admin wants to limit who can access the Maintenance Mode Scheduler tool.

- 1.) Log into the Management Server where the SCOM 2012 Maintenance Mode Scheduler is installed. Browse out to C:\Program Files\SCOM Maintenance Mode Scheduler
- 2.) **Double click** on the file **SecureMMWeb.exe**
- 3.) On the User Access Control dialog pick Yes
- 4.) The Secure SCOM MM Scheduler tool will launch
- 5.) Type in the domain users and domain groups you want to have access to the tool. Make sure you grant yourself access as well. For multiple users and groups, use a comma to separate them.



- 6.) Click OK
- 7.) You should get a pop up dialog telling you that the users and groups have been successfully granted access.



- 8.) The website is now secure and users will be authenticated before they are allowed access to the site.

## Modify One Click Maintenance Mode Default Minutes

In this scenario users only want servers to go into maintenance mode for 30 minutes when clicking One **Click Maintenance Mode**

- 1.) Go to the **hidden Admin** page. <http://yourMSServer/MM/Settings>
- 2.) Under the **Customization Section**
- 3.) Change the value of One Click Maintenance Mode minutes from 60 to 30.

**Customization**

**Management Server:**

**Date Format:**

**Enable Unix/Linux:** ☒

**Enable Groups:** ☒

**Enable Class:** ☒

**Enable Instant MM:** ☒

**Enable Manage:** ☒

**Instant MM Minutes:**

**Save**

## Change Date Format

- 1.) Go to the hidden Admin page. <http://yourMSServer/MM/Settings>
- 2.) Under the **Customization** Section
- 3.) Change click on the Radio button for you correct Date Format.

### Customization

Management Server:

OM07.SCOM2K16.com



Date Format:

28/10/2018 00:31 (24 Hour)

